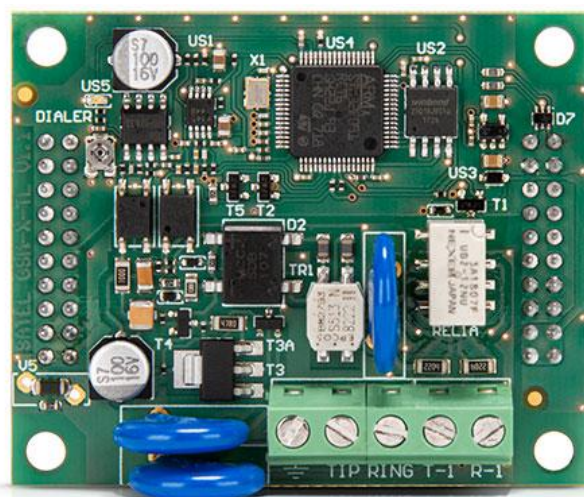


# GSM-X-PSTN

GSM-X-PSTN is a device designed to expand the communication options of the **GSM-X LTE** and **GSM-X** universal modules by adding support for the PSTN analog telephone line. This additional transmission path is used by the module to send event codes to the monitoring station (AUDIO reporting). The channel may be used in parallel with data transmission via cellular network or as an alternative to it.

- compatible with: GSM-X LTE, GSM-X
- support for PSTN telephone network as additional communication channel



Board dimensions	61 x 51 mm
Operating temperature range	-10...+55°C
Standby mode current consumption	20 mA
Max. current consumption	45 mA
Weight	25 g
Maximum humidity	93±3%
Environmental class according to EN50130-5	II