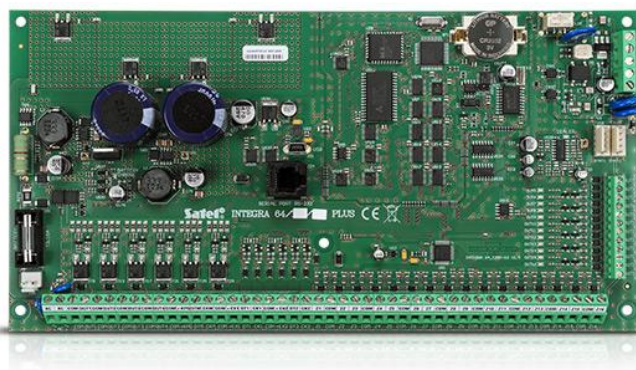


INTEGRA 64 Plus

Due to their full compliance with the requirements of EN50131 Grade 3, the **INTEGRA Plus** control units are perfectly fit for implementation of advanced security systems at locations with particularly high risk of burglary, such as banks, jewellery stores or public utility facilities. The control units are characterised by extended functionality, due to which they can be used for implementation of access control systems or even intelligent building solutions.

- full compliance with EN50131 series of standards for Grade 3 equipment
- built-in advanced 2 A+1.5 A power supply with extended autodiagnosics
- up to 64 zones with programmable EOL value and support for 3 EOL configuration
- USB port for programming via PC
- up to 32 partitions, 8 objects
- up to 64 fully programmable outputs
- dedicated buses for communication with keypads and expansion modules
- system operation via touchscreen keypads, LCD keypads, partition keypads, remote control keyfobs or proximity cards
- remote system operation with PC, smartphone or voice-guided telephone menu
- 64 independent timers for automatic control
- access control and home automation features
- non-volatile event log with 5631 entries, with on-line printing support
- support for 192+8+1 user codes
- firmware upgrades via PC
- option of not reporting possible problems with connecting to the SATEL server as a failure



Installer-defined text messaged	64
Extender circuits	up to 64
Environmental class according to EN50130-5	II
Voice messages	16
Communication buses	1+2
Maximum number of programmable inputs	64
Maximum number of programmable outputs	64
Maximum humidity	93±3%
Maximum current consumption from the battery	200 mA
Maximum current consumption from the 230V network	400 mA
Maximum battery charging current	1500 mA
Keypads	up to 8
Weight	320 g
Battery cut-off voltage (±10%)	10,5 V
Power supply output voltage	10,5...14 V DC
Supply voltage (±15%)	20 V AC, 50-60 Hz
Battery failure voltage threshold (±10%)	11 V
Telephone numbers for notification (voice/PAGER + SMS)	16+16
Carrying capacity of the +EX1 and +EX2 outputs (±10%)	3000 mA
Low current programmable outputs rating	50 mA
High current programmable outputs rating	3000 mA
Carrying capacity of the +KPD output (±10%)	3000 mA
Event log	5631
Objects	8
Current consumption from the 230V network in standby	135 mA
Current consumption from battery - standby	130 mA
Security grade according to EN 50131	Grade 3
Partitions	32
Timers	64
Users + Administrators	192 + 8
Programmable wired inputs	16
Power supply current efficiency (supplying devices + charging batteries)	2000 + 1500 mA
Programmable wired outputs	16
Supplying outputs	3
Board dimensions	264 x 134 mm
Operating temperature range	-10...+55 °C
Recommended transformer type	75 VA