

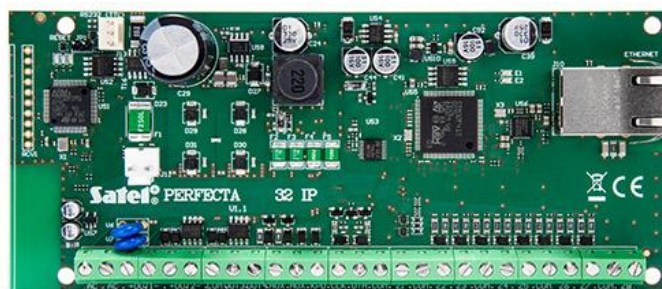
# PERFECTA-IP 32

The PERFECTA-IP alarm control panels are designed to protect small and medium-sized premises such as apartments, single-family houses, segments in terraced houses, offices, small businesses etc. They provide protection as required by EN 50131 for Grade 2. The control panels are characterized by simple configuration as well as easy and intuitive operation using keypads. The alarm system can also be controlled remotely using the **PERFECTA CONTROL** mobile application and keyfobs working in the 433 MHz frequency band (with the **INT-RX-S** module connected).

An Ethernet communicator is used in the PERFECTA-IP 32 model. It enables using a mobile application with PUSH notification capability, remote system configuration from the **PERFECTA Soft** program, and event reporting (e.g. to a security agency monitoring station). The control panel electronics board is provided with 8 hardwired zones and 4 hardwired outputs. Their number can be increased by connecting the **INT-E** zone expansion modules and **INT-O** or **INT-ORS** output expansion modules. This makes expansion of the system possible by adding more detectors, sirens or actuators (to control the garage door, roller shutters/blinds, garden sprinklers).

The control panel enables the system to be divided into two partitions with three arming modes (day, night, full) to select from. Each zone can be assigned to one or both supervised areas.

The system can be configured in two ways: from a computer with PERFECTA Soft program installed (locally – connection via RS-232 (TTL) port, remotely – using data transmission over Ethernet), as well as from a keypad, using key sequences in the service menu.



- compliance with EN 50131 Grade 2
- from 8 to 32 programmable hardwired zones:
  - configuration options: NO, NC, EOL, 2EOL/NO, 2EOL/NC
  - support for roller shutter and vibration detectors
- from 4 to 12 programmable hardwired outputs
- 2 power outputs on the mainboard
  - built-in Ethernet module (reporting to monitoring station, mobile application, PUSH notifications)
- system division into 2 partitions:
  - 3 arming modes in each partition
  - option to assign a zone to two partitions
  - user-controlled or timer-controlled
- communication bus for connecting keypads (**PRF-LCD**), expansion modules (**INT-E**, **INT-O**, **INT-ORS**, **INT-RX-S**)
- system control using:
  - PRF-LCD keypads (up to 4)
  - **PERFECTA CONTROL** mobile application
  - keyfobs operating in the 433 MHz band (up to 15) – connection of **INT-RX-S** module required
- firmware updates available
- passwords:
  - 15 user codes
  - 1 service code
- editable names (of users, partitions, zones, outputs and modules) for easy control and supervision of the system
- 8 timers with exceptions setting capability
- memory of 3584 events
- automatic diagnostics of the system main components
- built-in switch-mode power supply:
  - over-current protection
  - battery deep discharge protection

- battery charging current control
- programming control panel settings:
  - locally – keypad or computer with PERFECTA Soft program installed, connected to the control panel RS-232 (TTL) port
  - remotely – computer with PERFECTA Soft program installed, connecting to the control panel via Ethernet

Output voltage range	10,5 V...14 V DC
Maximum number of programmable outputs	12
Supplying outputs	2
Communication buses	1
Keypads	up to 4
Security grade according to EN 50131	Grade 2
Recommended transformer	40 VA
Users	15
Current-carrying capacity of KPD output	500 mA / 12 V DC
Programmable wired outputs	4
Battery charging current	500 mA
Power supply output voltage	12 V DC $\pm 15\%$
Power supply output current	2 A
Low current programmable outputs rating	25 mA / 12 V DC
Current-carrying capacity of programmable high-current outputs	1000 mA / 12 V DC
AUX output	500 mA / 12 V DC
Standby current draw from battery	110 mA
Event log	3584
Maximum number of programmable inputs	32
Programmable wired inputs	8
Maximum current consumption from the battery	110 mA
Environmental class according to EN50130-5	II
Battery cut-off voltage ( $\pm 10\%$ )	10,5 V
Battery failure voltage threshold ( $\pm 10\%$ )	11 V
Maximum humidity	93 $\pm 3\%$
Weight	108 g
Max. current consumption	200 mA
Standby mode current consumption	100 mA
Supply voltage ( $\pm 15\%$ )	18 V AC, 50-60 Hz
Operating temperature range	10...+55 °C
Board dimensions	160 x 68 mm
Timers	8
Partitions	2